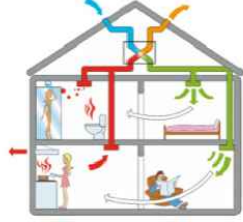


OGNI APPARTAMENTO E' DOTATO DI:

- POMPA DI CALORE



- VENTILAZIONE MECCANICA



- ASPIRAZIONE CENTRALIZZATA



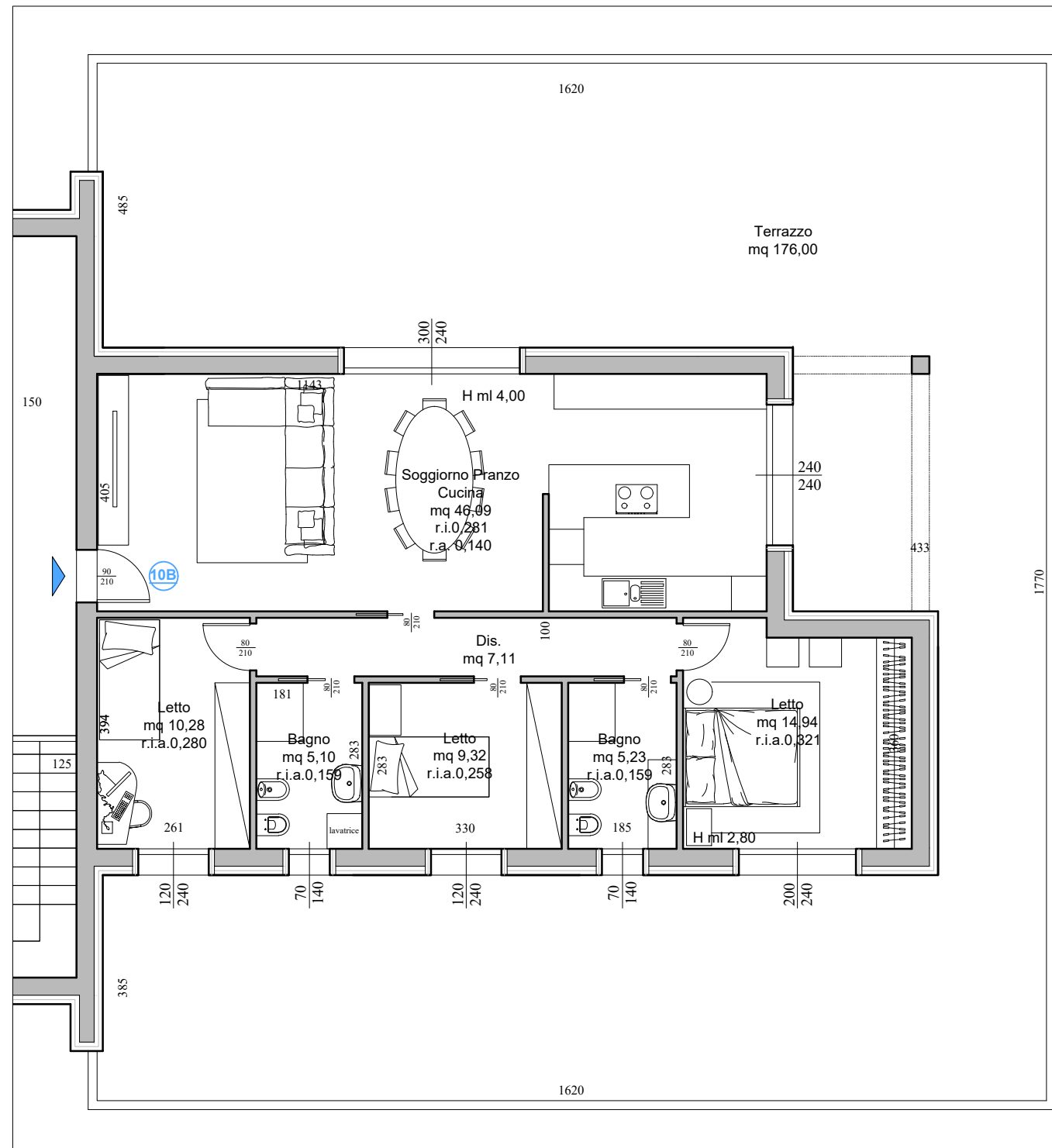
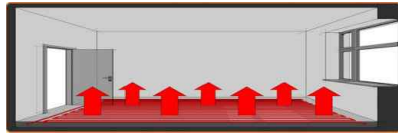
- PANNELLI FOTOVOLTAICI



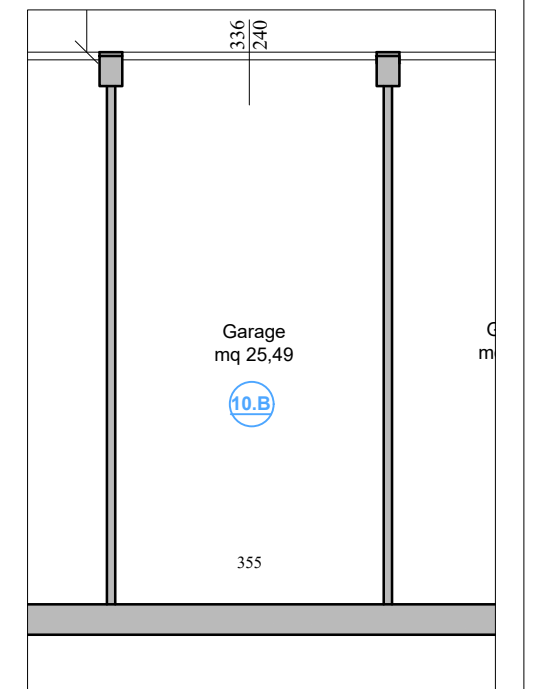
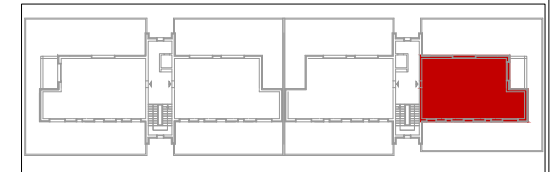
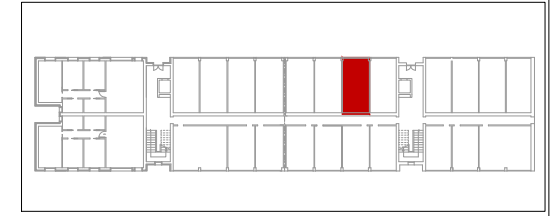
- IMPIANTO ANTIFURTO



- RISC. A PAVIMENTO AUTONOMO



## APPARTAMENTO 10.B - PIANO TERZO



PIANO TERZO			
SUPERFICI COMMERCIALI			
UNITA'	SUPERFICIE LORDA mq	% RIDUZIONE	SUP. COMMERCIALE mq
<b>10.B</b>	Appartamento mq 120,70	100	120,70
	Balconi mq 178	30	53,40
	Garage mq 28,20	50	14,10
	Parti comuni		6,00
	<b>Superficie commerciale</b>		<b>194,20</b>
Posto auto esterno			
Allacciamenti Acqua, ENEL, Telecom, Fognatura, Frazionamento e Accatamento			
<b>TOTALE</b>			

QUADRILOCALE